



Hudson River
PCBs SUPERFUND SITE



Information Session

Fort Edward, June 17, 2009

Dredging Project Update

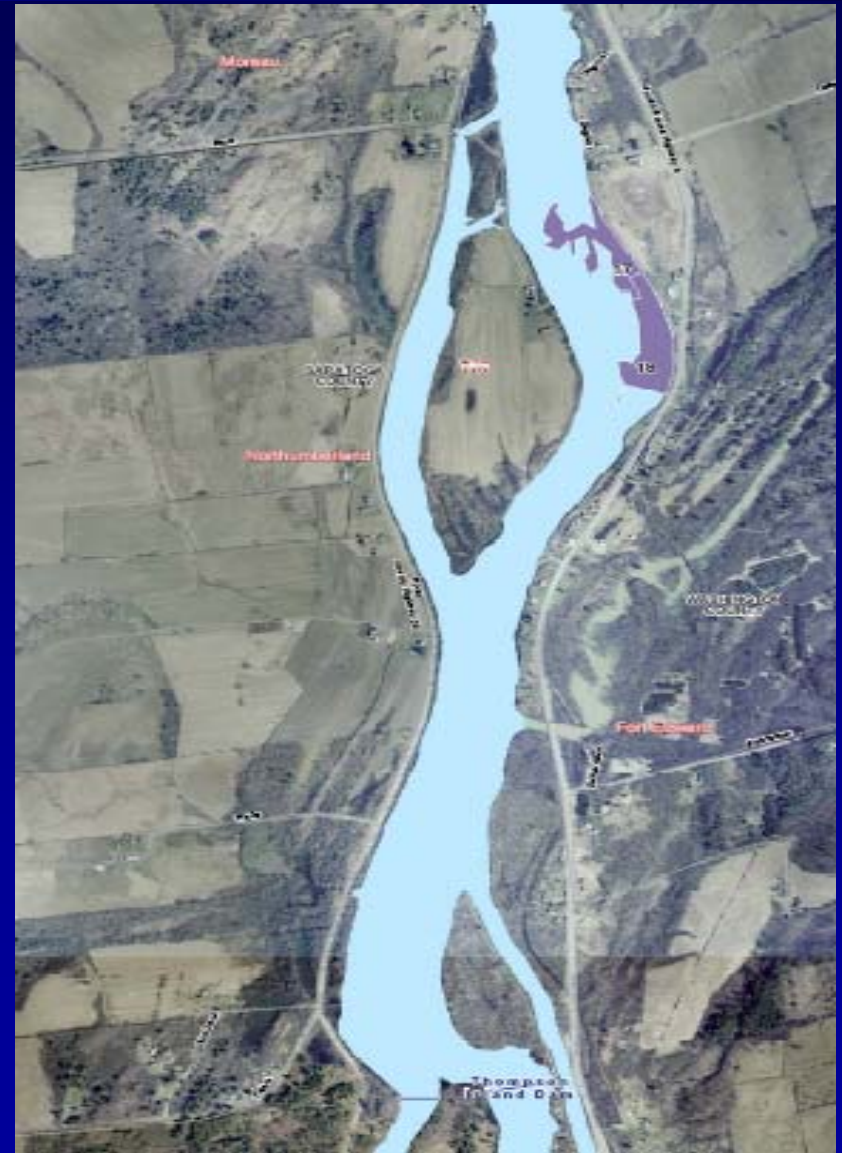


Dredging Project Update

- Dredging started May 15, 2009
- Video



Certification Units

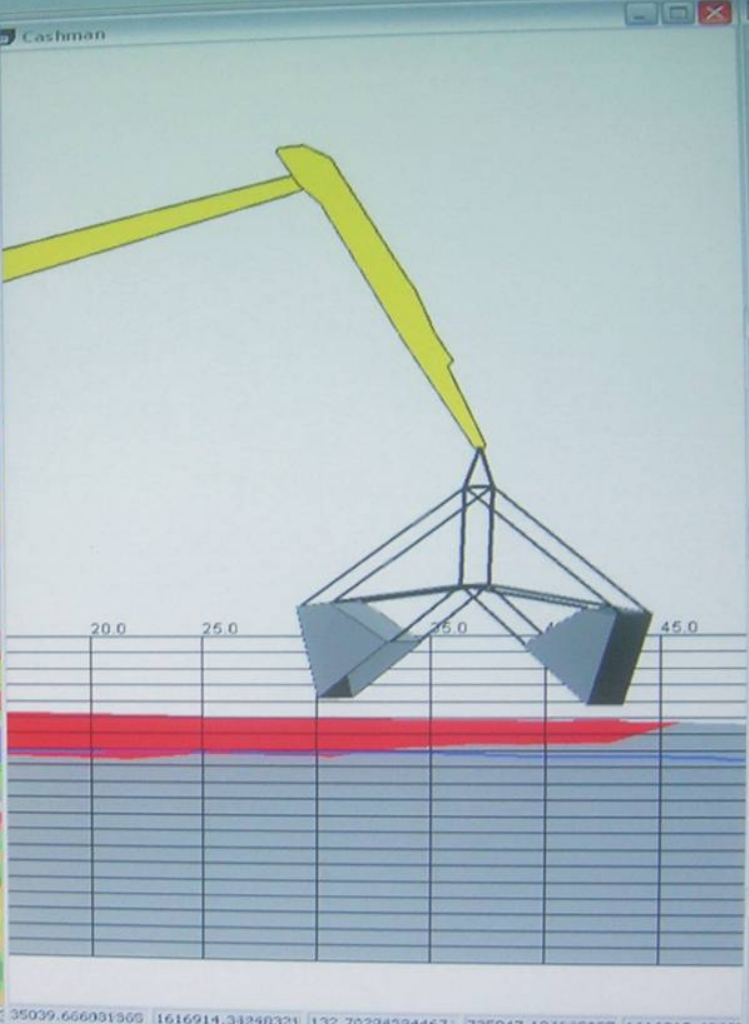
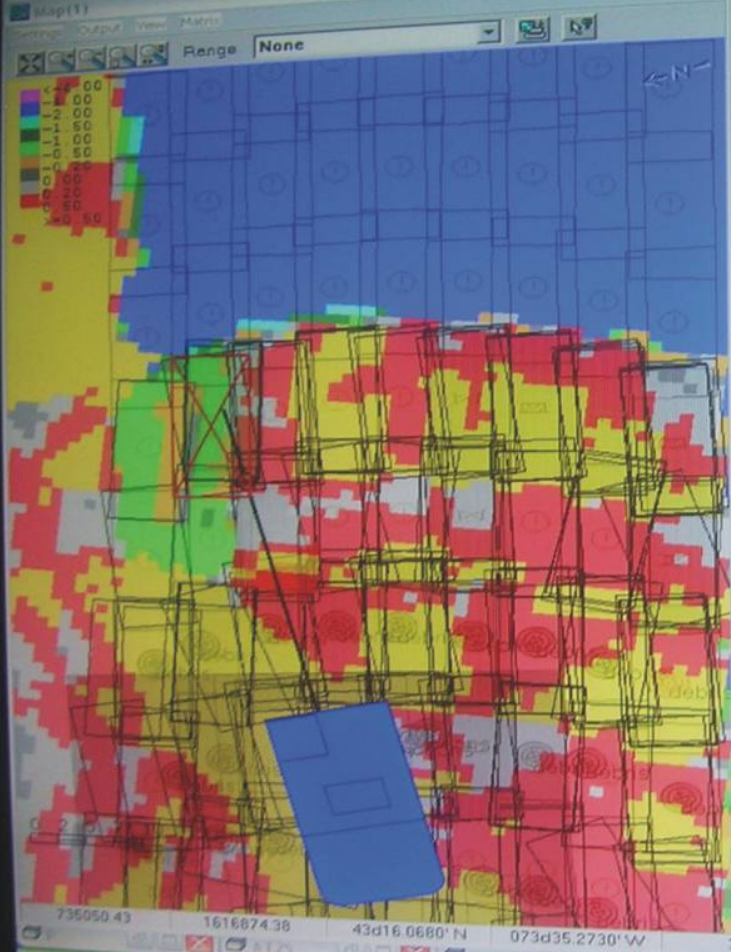


Update on Phase 1 Dredging Progress

River Operations:

- Rock Dike and Silt Curtain In-Place
- Tree Trimming (complete)
- Debris Removal (complete)
 - Additional debris removal will be done as needed if large debris is encountered
- Dredging Underway
 - West Channel at Rogers Island
 - East Channel at Rogers Island





GPS Mode F
Hdd
Chainage
Offset
Bucket Final
P Dist To Cen
P Difference:

Proximity switch
Switch Position

Multi Tide
119.00

Cashman Interface

Sensor	Reading
Boom Angle	25.5
Stick Angle	294.7
Pitch Angle	-1.8000000
Roll Angle	360.8
Open Sensor	44.0755102
Rotax Angle	-14.2

Undul	0.00 FTUS	
Tide corr	-132.71	75
Sync err	N/A	
Time source	computer	
		100

QC
QC VALUE 19.93
Last Time 9:57:00 PM

\$GNGGK,015049.40,060909.431E
\$GNHDT,046.810,7.12CN
\$GNGGK,015049.10,060109.431E
\$PRM,0.0,0.0,0.0,0.0,0.0,0.0

Update on Phase 1 Dredging Progress

River Operations:

- **Sheet Pile Wall Near Griffin Island (40% Complete)**
- **Upcoming activities**
 - Residual dredging
 - Certification unit review/approval
 - Backfilling/capping

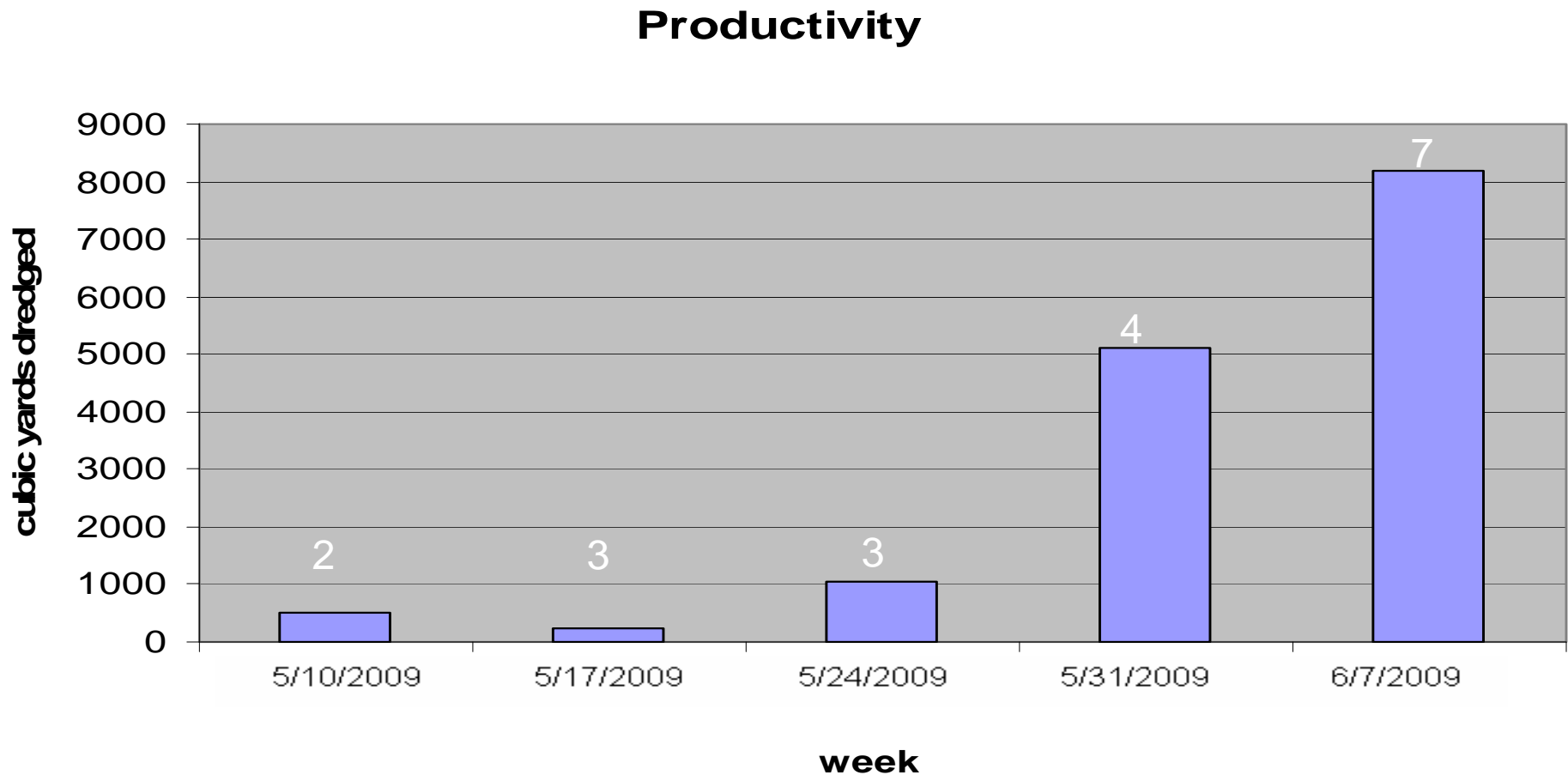
Facility Operations:

- **Up to 6 barges can be staged**
- **Start 24 hour operation last Saturday**
- **Rail car loading**

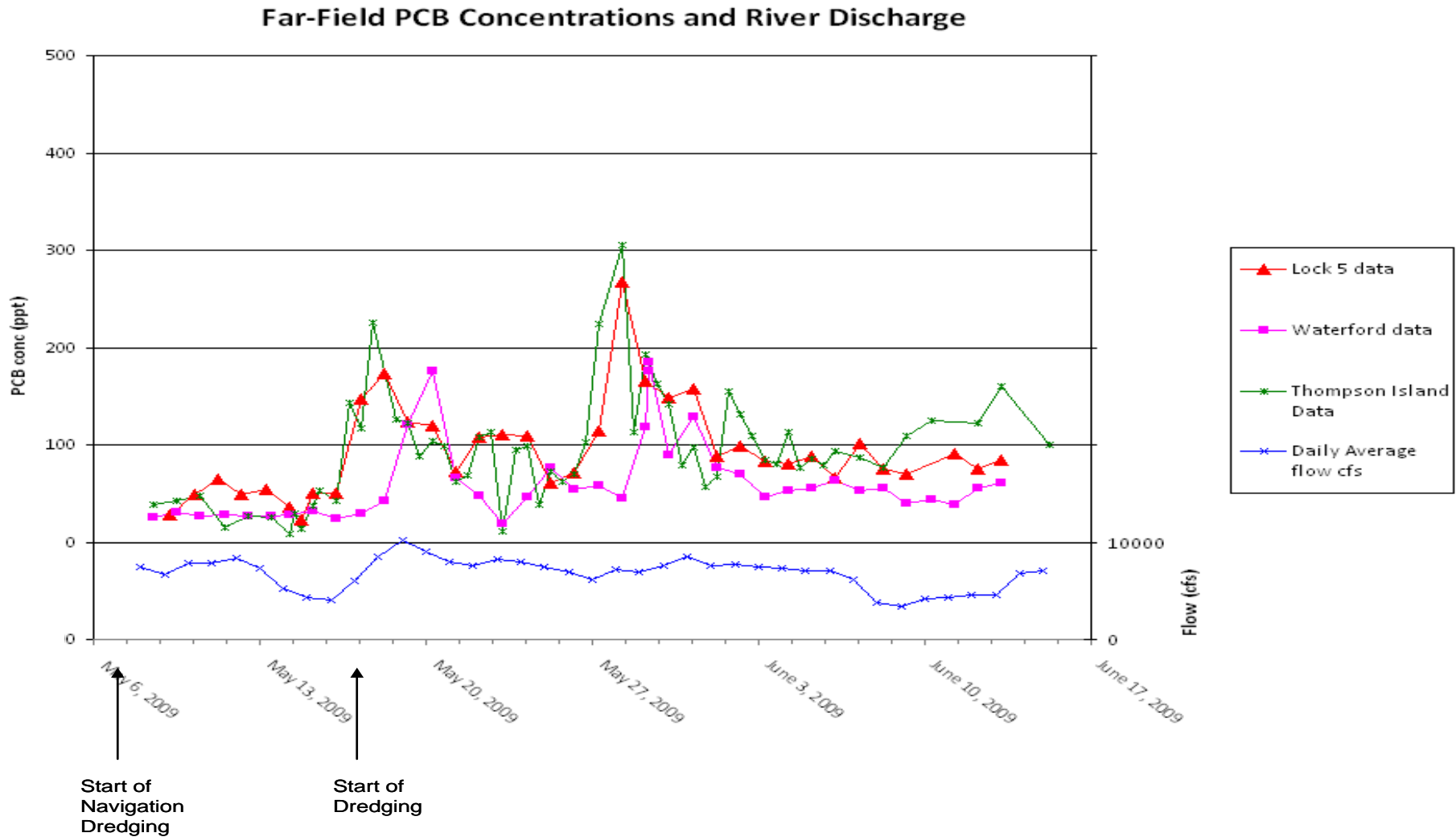


Productivity

- Approximately 16,400 cubic yards inventory dredged as of June 13, 2009

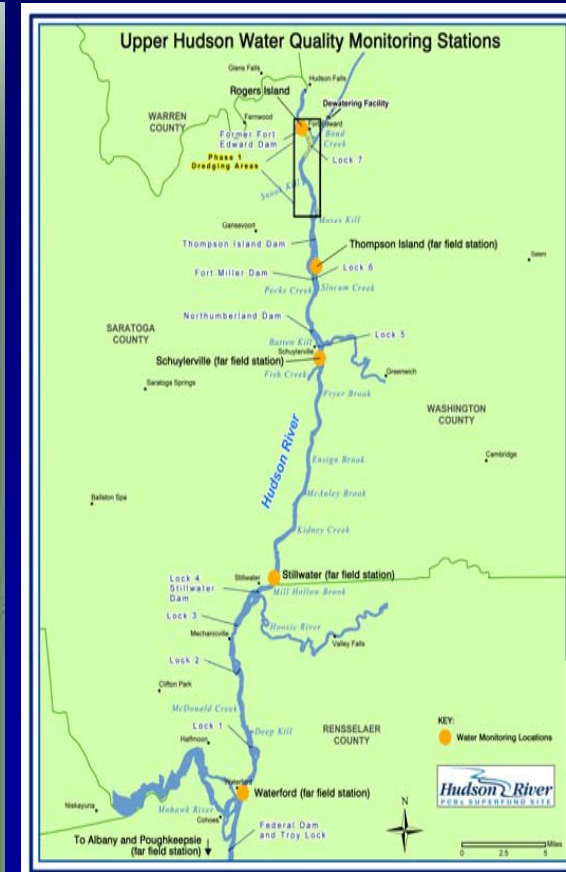
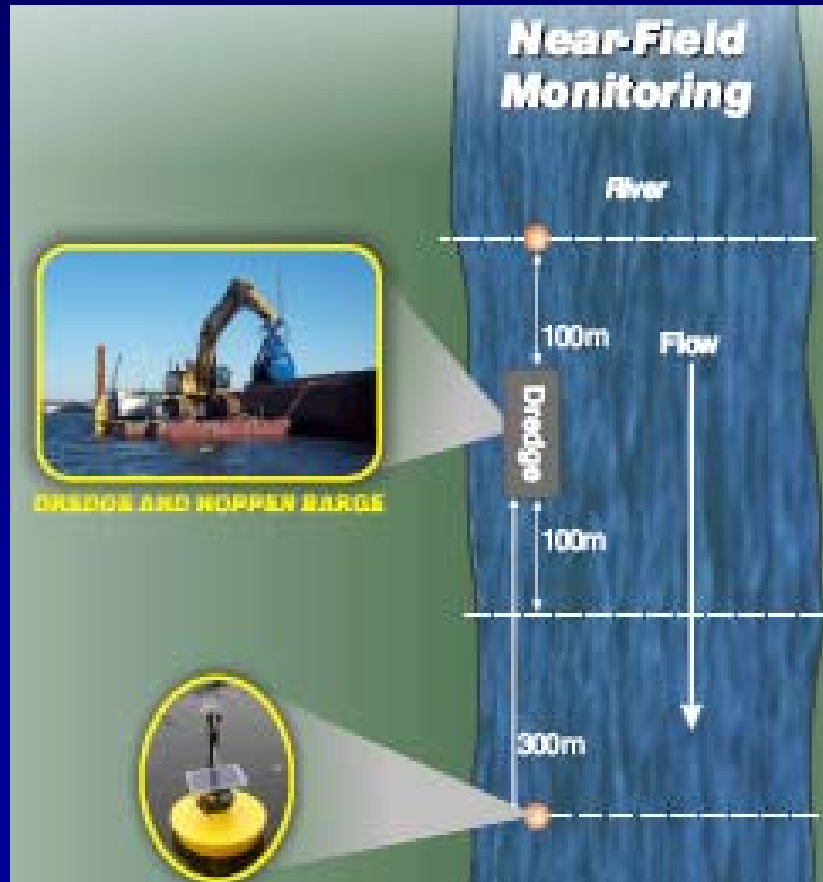


Far-field Water Monitoring Data



Performance Standard Monitoring

- Monitoring along river and at processing facility



Monitoring Exceedances

- Some noise exceedances in east channel
- One air exceedance at facility
- Several air exceedances:
 - one in west channel
 - two in east channel

EPA's Monitoring Data Website

- EPA has created a website for the performance standard monitoring data that is being generated as part of Phase 1 dredging and sediment processing facility operations.
- www.hudsondredgingdata.com

